

Mobile Data Collection System

Axxonet System Technologies specializes in providing organizations with Hardware, Electronics, and Software tools to enhance the quality of data collection and analysis.

PoiMapper is the first Multi Platform mobile geomapping web service offering affordable location based services, designed for a seamless and simple user experience.



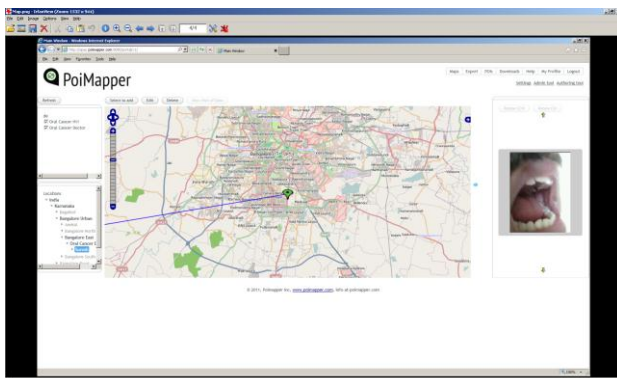
Any field worker can now collect and share Points Of Interest (POIs). Simply download the application, create an account and start using the service.

PoiMapper has been built by Pajat Management Finland, with their partners in India Axxonet System Technologies.  **Pajat** 

Our Mobile Data collection kit enables People to become digital producers of community and organizational related location aware data.

No expensive back-end hardware investments, installations or own ICT personnel is needed. Developed together with global NGO Plan international, PoiMapper is custom designed for this purpose.

Point-of-interests(POIs) -such as person information, community information, health centers, schools and water points, sales information, mobile tower information - can now be documented with affordable mobile phones and viewed over digital maps. Routes to these and areas (e.g. community boundaries), may be recorded with the device's GPS feature.



Our framework can be used to ensure and document that a certain activity has been carried out at a GPS locked location. For example installation of a Handpump, Construction of a Road, or Refilling of a Diesel Generator at a Mobile Phone tower.

Collected POI data can be viewed globally over the internet with a web browser; thus enabling real time field work impact visibility. All field work, planning, monitoring & evaluation and program fund allocation activities can now benefit from real time transparency.

Our solution is a mobile vendor independent service with a mobile Java MIDP or Android client as the front-end. Based on an affordable and fully customizable modern SaaS (software-as-a-service) model, it is targeted for organizations that wish to start harnessing Remote data collection, location based services / GIS data as a key strategic asset.

A comprehensive mobile geomapping , data management, visualization and sharing solution, that can be integrated with open source portal tools such as Drupal or Vaadin, and map engines such as Googlemaps or Geoserver.

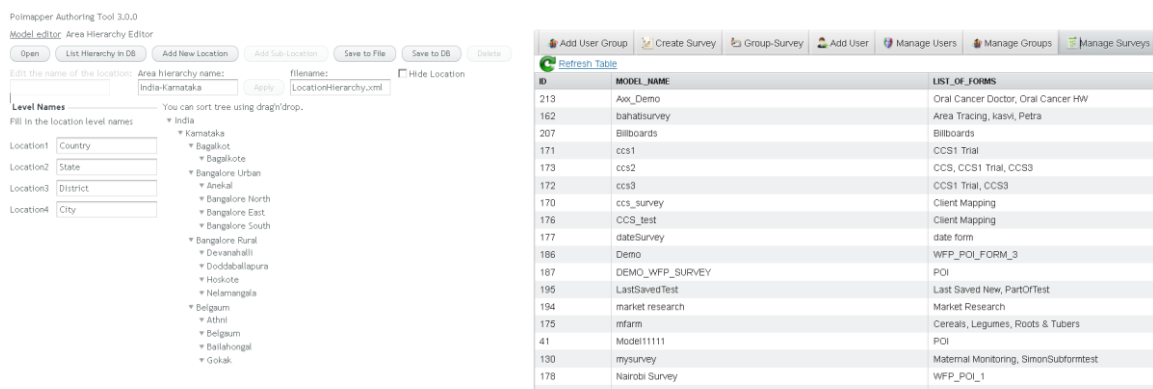
NAME	EDITOR	CREATED ON	LAST MODIFIED ON	WHAT IS THE COLOR OF THE PATCH?	HOW MANY PATCHES	FAMILY HISTORY OF CANCER?	PIAN OR CHEWING TOBACCO?
Muralidharan	ax	2012-01-10 11:18:58 54562	2012-01-10 11:18:58 54562	White	Single	false	No
Oral 1	ax	2012-01-10 12:29:12 669403	2012-01-10 12:29:12 669403			false	No
John	ax	2012-01-10 12:29:15 637946	2012-01-10 12:29:15 637946			true	No
Suresh	de	2012-01-11 08:18:49 896693	2012-01-11 08:18:49 896693			true	Heavy



Features

- **Make your own Survey Questionnaire's** – You don't need a software engineer to make your survey questionnaire or to load it to a remote phone, using our unique Authoring tool
- **Integrate the Data** into your own Workflow, Servers, Databases, using our custom Integration services
- Runs on standard low-end phone, as well as high end smart phones
- POI mapping of ;
 - *Places*; e.g. location of school/water point
 - *Route*; e.g. naming roads
 - *Area*; e.g. community boundaries
 - structured survey data as numbers, text, exclusive and multiple choice
 - Multimedia; images and audio note

- Dedicated Java MIDP / Android application for GPS enabled mobile phones with Android and iPhone versions to follow
 - POI data can be visually viewed on digital maps, such as Google maps, with reports generation of POI data
 - Application supports online/offline for work in inaccessible locations
 - Downloading of POI data to mobile phone



- Modern SaaS multitenant(one solution serving many organizations) model
 - No need for expensive hardware/license investments or own IT personnel anymore.
 - No need for in value depreciating software licenses; cost shows as an operational expenditure in balance sheet, user per month fee
- Not traditional vendor – client model but close collaboration and co-creation
- Includes a web based authoring tool(application creator) for creating applications and corresponding database models for storing the collected data
- Possibility to integrate open source analytics tools such as Pentaho
- Open API for accessing the stored data with pre-existing integration to Facebook
- Multiple users able to browse and update the same information and previous versions of data maintained for tracking purposes; mining the data provides baselines of impact.
- All data is accessible globally over Internet via a standard web browser

Integration

Integrate the Mobile data collected with your existing IT Infrastructure, Workflow, Databases or systems. *Pull Data into your IT systems*

Eg. Integration with OpenMRS Electronic Medical Records System

OpenMRS Patient Search interface showing a table of patient records. The table has columns for Identifier, Given, Middle, Family Name, Age, Gender, and Birthdate. The results are for 'John'.

Identifier	Given	Middle	Family Name	Age	Gender	Birthdate
7279MP-4	John	Mamwa	Shavola	55	♂	11/12/1956
5859NT-7	John	Masitza	Leonida	37	♂	27/05/1974
9076AM-1	John	Mulama	Kanuna	14	♂	18/05/1997
6166MT-5	John	Mutuenji	Kagote	40	♂	24/10/1971
5562BF-8	John	Wamiocho	Eteleng	36	♂	10/07/1975
4908P-3	Johnbosco	Omialo	Cherus	51	♂	28/08/1960
8339EG-3	Johnpaul	Naibei	Malome	13	♂	27/10/1998
2270T-1	Johnpaul	Sande	Amimo	59	♂	12/08/1952
1961MP-3	Johnson	Kipchrchr	Telikut	51	♂	20/04/1960
2871TU-5	Johnstone	Ambote	Echessa	57	♂	03/07/1954
5964MT-3	Johnstone	Chebochok	Laboso	44	♂	09/06/1967
7981TU-7	Kitur	John	Tigoi	8	♂	24/07/2003
4861TU-4	Nicanor	Majiga	John	43	♂	04/11/1968
6136NT-7	Tuwei	John	Imbusi	32	♂	05/12/1979

Areas of Use

- Health, Community Health, and Wellbeing
- Environment & Climate
- Forestry and Agriculture
- Rural Development
- Irrigation
- Education
- Mobile Tower Monitoring
- Disaster Management
- Disease monitoring
- Drug trials
- Population and Economic Surveys
- Infrastructure Accountability

OpenMRS configuration interface showing a list of symptoms and a configuration window for a Radio Button field type. The configuration window includes options for Question Text, Mandatory, Help Description, and Selections.

OpenMRS User Management interface showing a table of users. The table has columns for ID, USERNAME, ACTIVE, GROUP_NAME, USER_LEVEL, and USER_LOCATIONS.

ID	USERNAME	ACTIVE	GROUP_NAME	USER_LEVEL	USER_LOCATIONS
62	androttest	true	Petra3006	ordinary	
9	another	true	poimapper	ordinary	
13	aganadio	true	poimapper	ordinary	Nairobi, Coast, North Eastern, Nyanza, Central
71	astwin_grp	true	AwxTestingGroup 3	ordinary	Kenya
77	ax	true	Awx_Demo_Group	admin,modeler	Kenya, India
41	axouser1	true	ordinary	ordinary	Anguilla
37	ayyappa1	true	poimapper	ordinary	United States, Kenya
40	ayyappa3	true	poimapper	ordinary	Thailand, Kenya
36	ayyappaa	true	poimapper	ordinary	Kenya, Madagascar
75	bill	true	Synovate Group	ordinary	Central, Eastern
15	cabguy	true	poimapper	ordinary	
60	ccs	true	CCS_test	ordinary	Kenya
54	ccsdemo	true	CCS-Group	ordinary	Embakasi
61	date	true	dateGroup	ordinary	
78	de	true	Awx_Demo_Group	admin,modeler	India
25	demo	true	poimapper	ordinary	Kenya
50	ewjkw	true	PetraMultiPage	ordinary	

Mobile Data Collection System includes

PoiMapper Mobile Phone Software

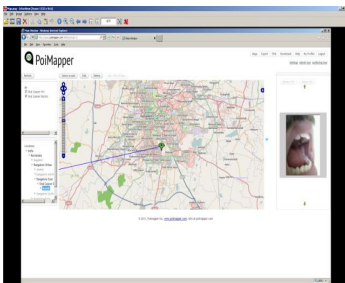
- PoiMapper Mobile Phone Software compatible with Symbian, J2ME and Android operating systems. Tested on Most Nokia Phones, Samsung, LG, HTC Phones (Android)
- PoiMapper Mobile Software can work in Offline mode and does not need an active GPRS connection
- PoiMapper Mobile Software can use a GPRS (or equivalent, eg CDMA, Wireless) connection to upload data to your PoiMapper database
- PoiMapper Mobile Software can collect GPS data if the Phone has GPS support



Desktop MC Interface Software

- PoiMapper Desktop MC (Mobile Client) Software to upload data from the Mobile Phone to the PoiMapper Database
 - Requires the Phone to be connected to the Desktop with the memory card visible on the Desktop PC
 - Desktop PC should have an internet connection

Online Cloud (Requires internet access to PoiMapper Server)



- PoiMapper Map Visualization Tool (View your data on a Map)
- PoiMapper Administration Tool for User management
- PoiMapper Authoring Tool to create your own Surveys
- PoiMapper Filter and Search tool, to view data in grids
- Export data to Excel, SPSS, CVS and other formats

Pack does not include

- Mobile phone
- Mobile Internet connection
- Desktop PC
- Desktop PC Internet connection